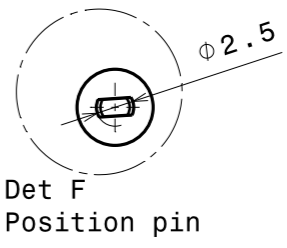
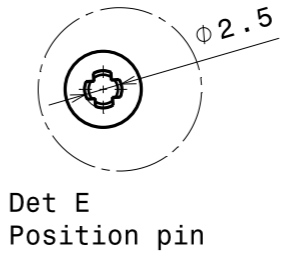
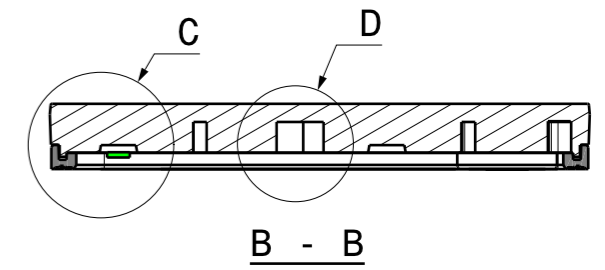


PCB max dimension
165 x 63.4mm



PART	TYPE	MATERIAL	COLOR / COATING
C18803_THEIA-IP-32-T2	Lens	Pmma	Transparent
C18798_THEIA-IP-32-SEAL	Seal	Silicone	Milky
CS19540_THEIA-IP-32-T2	Assembly		

Notes

- PCB or heatsink level.
- LED location
- Ensure LED fitting from a product specific 3D model available from www.ledil.com
- For more details about installation please see LEDiL Installation Guide on www.ledil.com

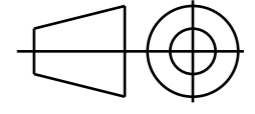
MECHANICAL DRAWING

PRODUCT
Theia -IP-32

LEDiL

Plastic moulding general tolerances according to DIN 16901-130 and applies if not otherwise shown in the drawing. Silicone moulding general tolerances according to ISO 3302-1 Class M3 and applies if not otherwise shown in the drawing.

FIRST ANGLE PROJECTION:

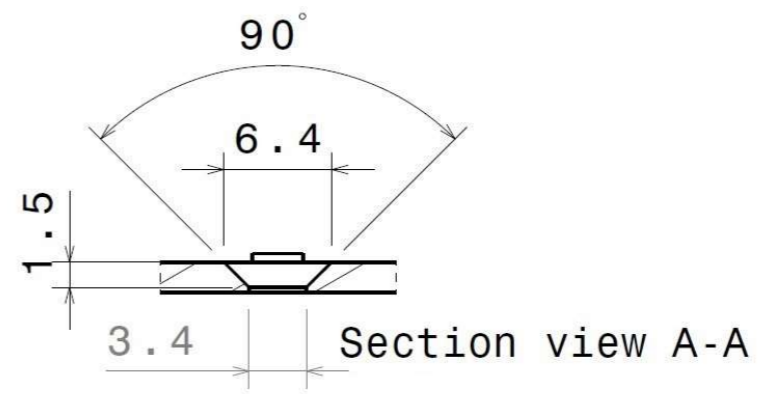
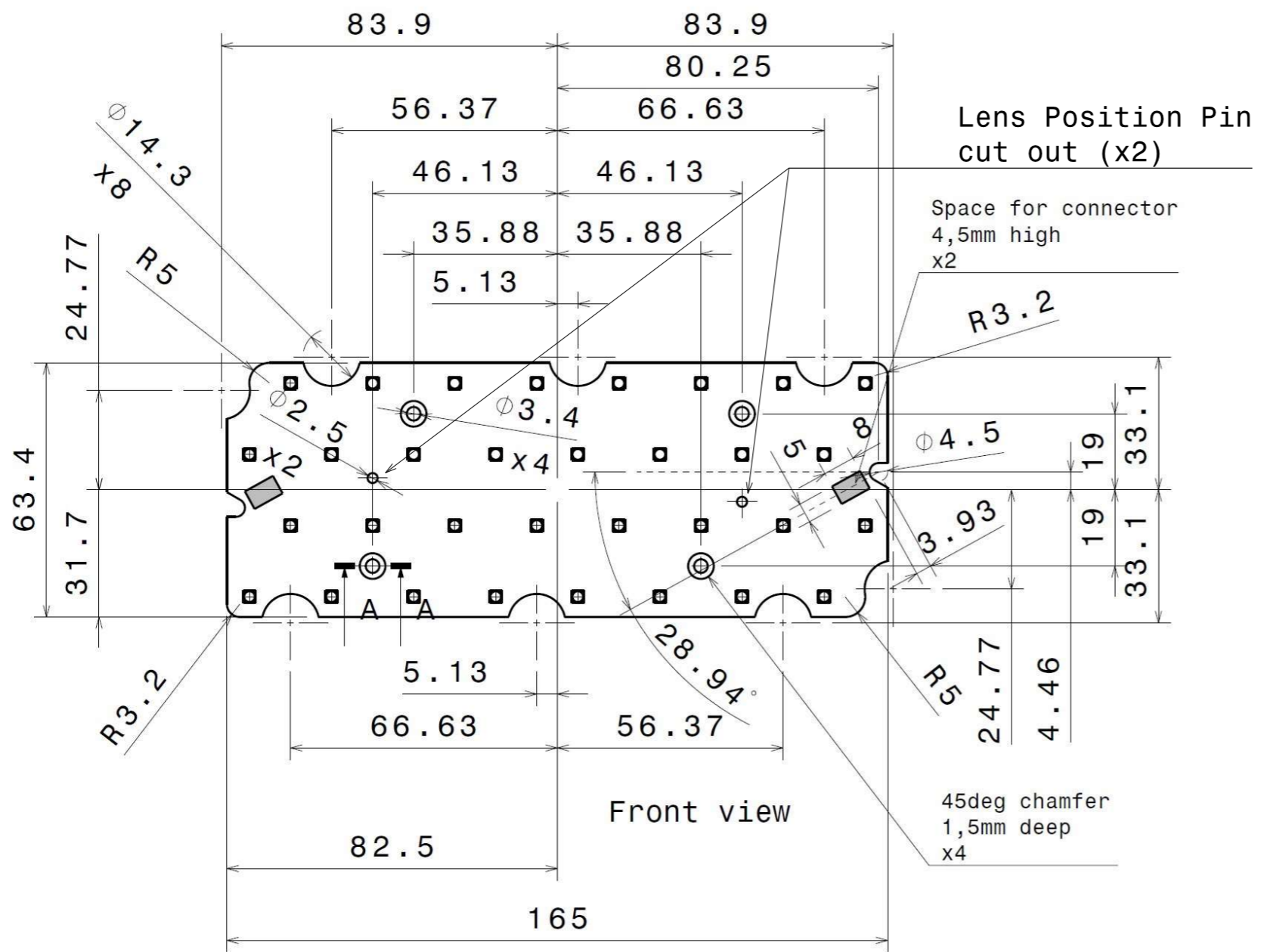


This drawing is the property of LEDiL Oy. It may not be copied or otherwise distributed without prior written permission from LEDiL Oy.

SCALE 1:1

WEIGHT 76g

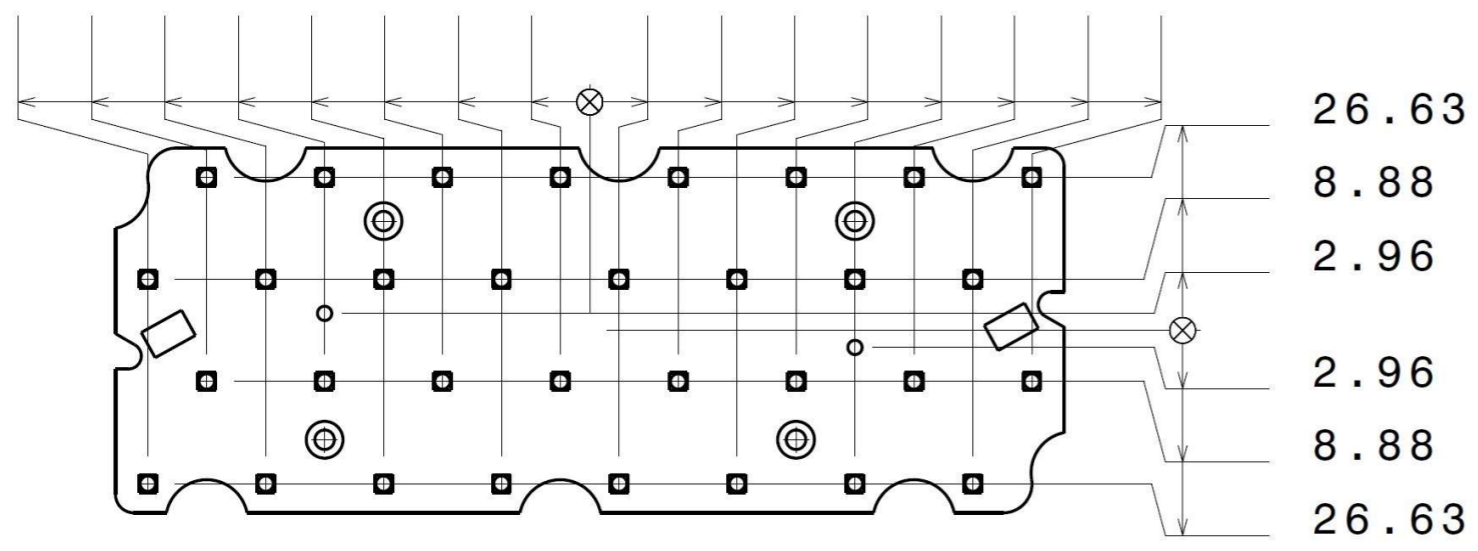
A3 SHEET 1/2



Screw detail (x4),
Use countersunk head fastener
max M3 size

- 76.88
- 66.63
- 56.38
- 46.13
- 35.88
- 25.63
- 15.38
- 5.13
- 5.13
- 15.38
- 25.63
- 35.88
- 46.13
- 56.38
- 66.63
- 76.88

Recommended PCB thickness 1.6mm.



Front view (LED)

PART	TYPE	MATERIAL	COLOR / COATING
Pcb	Layout		

MECHANICAL DRAWING		LEDiL
PRODUCT Theia-IP-32		
Plastic moulding general tolerances according to DIN 16901-130 and applies if not otherwise shown in the drawing. Silicone moulding general tolerances according to ISO 3302-1 Class M3 and applies if not otherwise shown in the drawing.	FIRST ANGLE PROJECTION: 	This drawing is the property of LEDiL Oy. It may not be copied or otherwise distributed without prior written permission from LEDiL Oy.
SCALE	WEIGHT -	A3 SHEET 2/2